

LOGISTICS ECOSYSTEM FOR ALL BUSINESSES



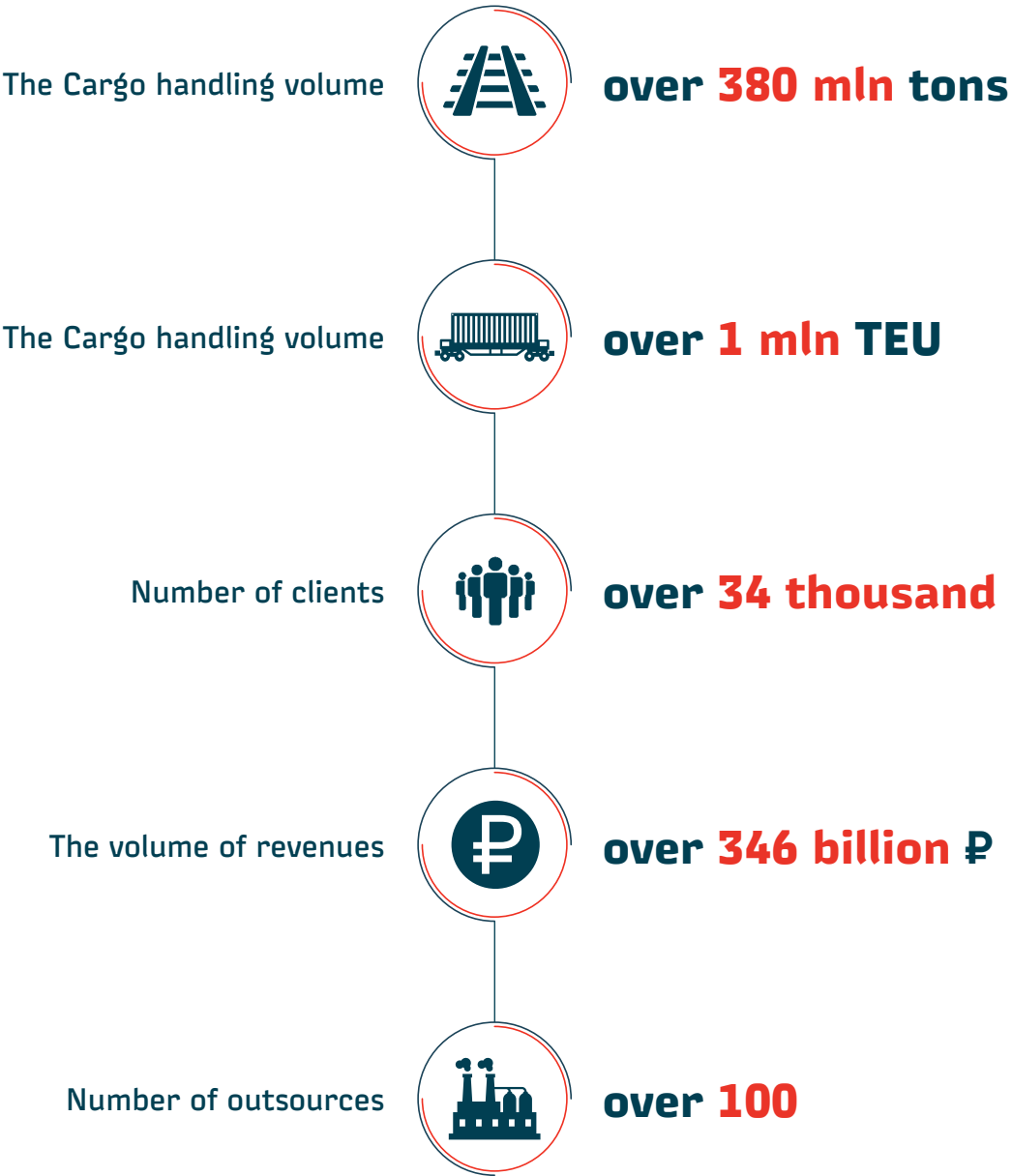
COMPANY AT A GLANCE

Multi-profile service logistic holding with a wide geography of presence, with a leading position in the Russian market of 3PL services, implementing a full range of transport and logistics services.

Founded in 2010.

Geography of presence: 12 branches, one of which is in the capital of Kazakhstan, and 14 separate subdivisions in Russia, subsidiaries in China and joint ventures in and Uzbekistan.

FOR 14 YEARS OF WORK:



KYE SERVICES:







MULTIMODAL SERVICE

- Organization of cargo delivery in containers by rail and multimodal transport chains using international transport corridors (CIS countries, China, Vietnam, Iran, India, UAE, EU countries)
- Cargo freight-forwarding and empty rolling stock
- More than 50 permanent delivery points in Russia and China
- Customs clearance
- Representatives and sales offices in regions of China, Kazakhstan and other countries

ADVANTAGES



Comprehensive service within business ecosystems



Customs registration



Special rates for direct railway services



LCL shipments of assembled cargo in universal containers from China to Moscow



Optimal price-quality ratio



The largest agent network in the Russian Federation



"Door-to-door" delivery



Reducing forwarding charge



Prompt informing on cargo dislocation



Seamless logistics within space 1520 and 1435



Transparency of delivery process



Delivery by any mode of transport, except for aviation



Cargo safety and Insurance



Flexible payment conditions




Own operating terminal in the TLT "Yuzhny Port"

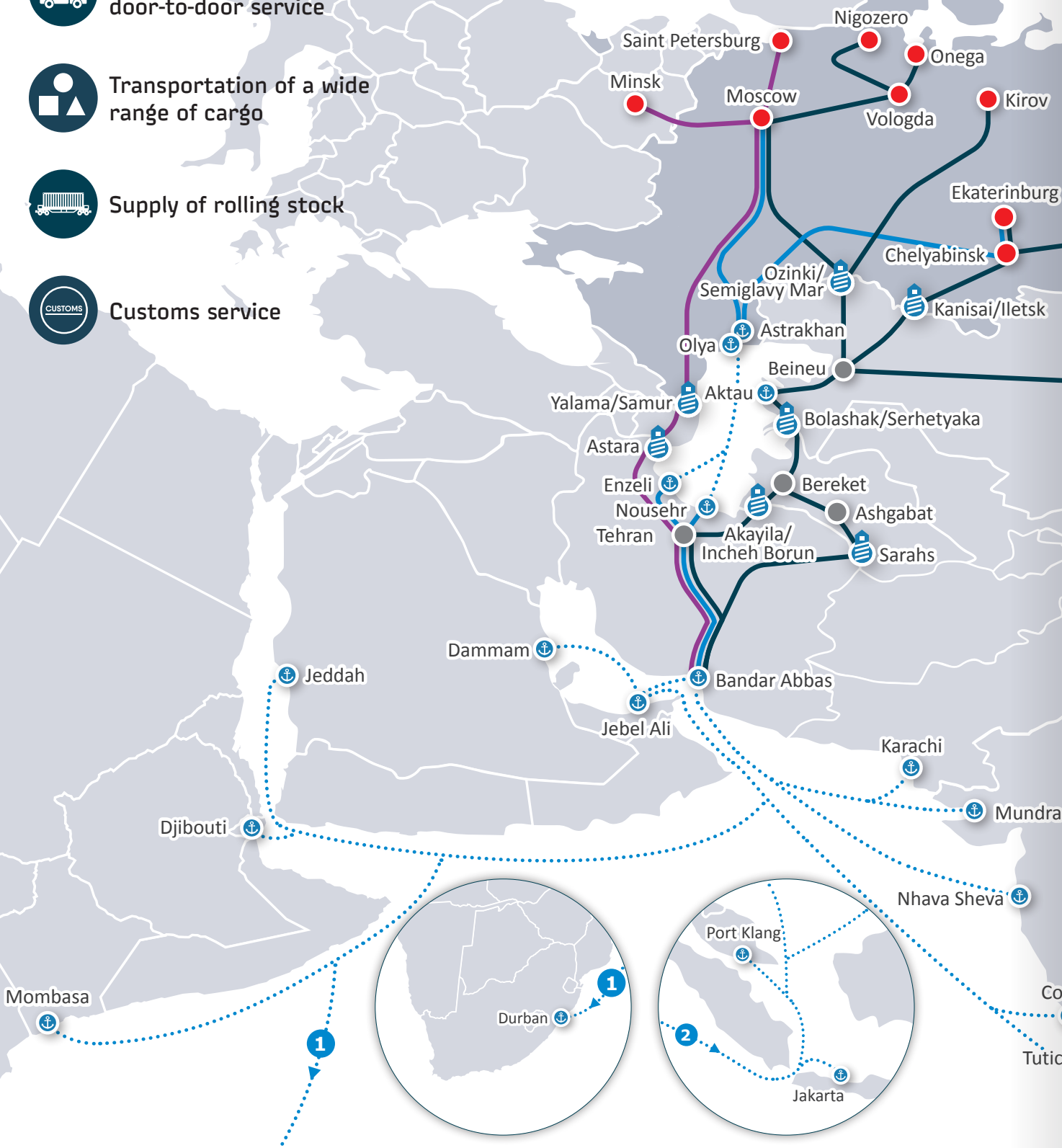
**MONTHLY CONTAINER TRAINS
AS PER SCHEDULE**

 Comprehensive door-to-door service

 Transportation of a wide range of cargo

 Supply of rolling stock

 Customs service



EXPRESS TRAINS

 Moscow/Chelyabinsk - Bandar Abbas – 15 days
Inche-Burun – Chelyabinsk/Moscow – 7 days

- Western route of INSTC
- Trans-Caspian route of INSTC
- Eastern route of INSTC
- Sea ways
- Freight origin points
- Border crossings
- Ports





SUPPLY CHAIN MANAGEMENT

Integrated logistics solutions for industrial enterprises including:

- Organization of the internal logistics (transport infrastructure maintenance, locomotive traction service, Loading and unloading operations)
- Enterprises' commodity flow management (raw materials supply, finished products shipment)
- Logistic technologies improvement (modeling, logistics consulting)

ADVANTAGES



RZD Logistics JSC is one of the largest networking company working in segment of Logistics outsourcing for industrial enterprises



Optimization of the logistics budget by reducing transport costs and developing optimal logistics solutions



Guarantee of a stable supply of raw materials and shipment of finished products



Release of Enterprises' resources and focusing on the company's main business – production increase



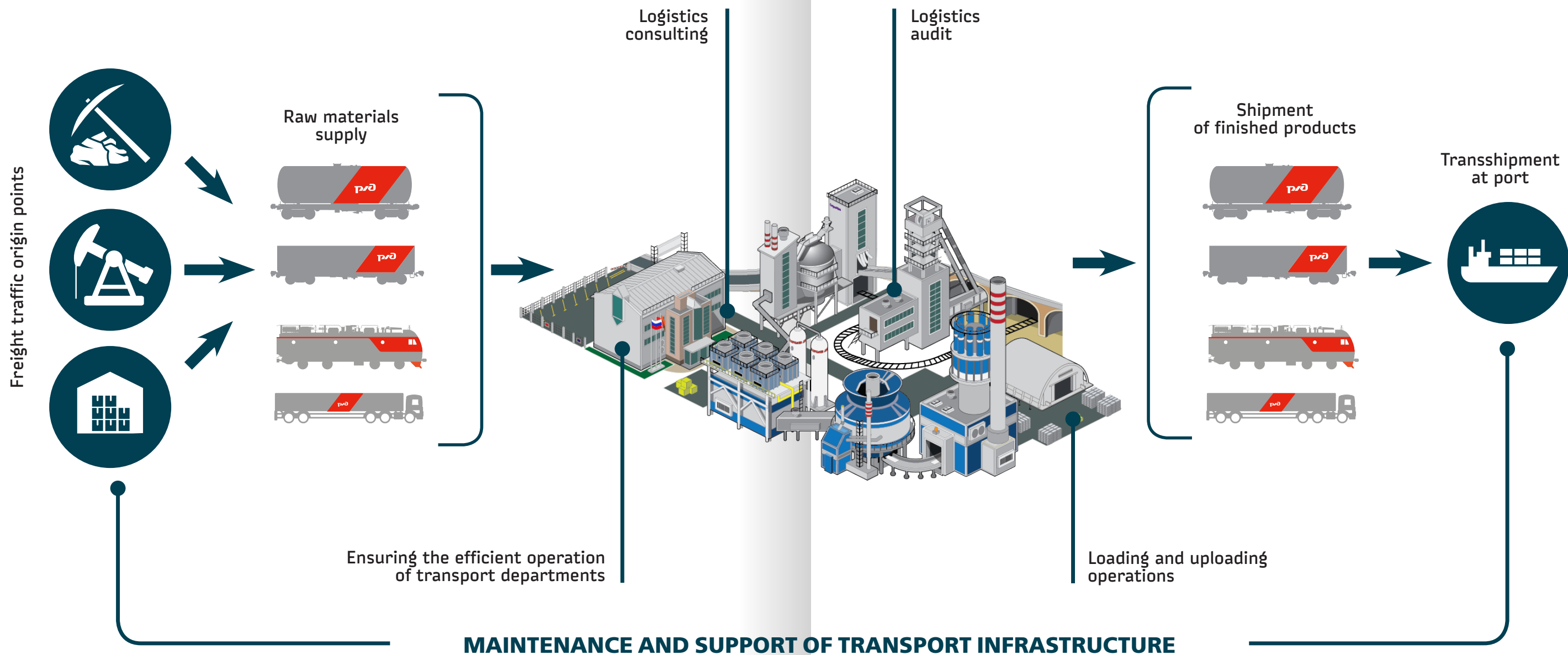
Consulting of any supply stage



Complex service:

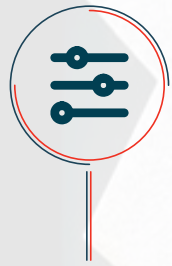
- Execution of transportation documents
- Rate payment
- Performance of the functions of consignor and consignee
- Interaction with carriers (including RZD), stevedores and seaports





ECONOMIC BENEFIT IN COMPLETED PROJECTS





BALANCE MODELING incoming and outgoing cargo flows and transport assets - logistics consulting

- Identification of the limiting processes of enterprise logistics
- Development of proposals for logistics optimization
- Building dynamic transportation models



DEVELOPMENT OF OPERATING MODEL

- Planning resources and building processes necessary for the work of the created model
- Preparation of IT solutions
- Development of technological maps of internal and external interaction
- Correction of technology documents
- Business Process Formation
- Selection, placement and training of personnel
- Development / optimization of the budget



MANAGEMENT Vehicle traffic and infrastructure control

- Development of optimal transportation parameters
- Coordination of loading and unloading
- Routing of cargo flows of enterprises, including the formation of route shipments
- Elimination of technological barriers to the movement of cargo
- Regulation of delivery of wagons (exclusion of downtime of loading / unloading fronts)
- 24/7 dispatching control
- Organization of work on the access roads to the enterprises
- Vehicle fleet management (wagons, locomotives, vehicles, lifting equipment)



OPERATING CONTROL

- Informing of the location of the cargo and the estimated date of arrival
- Monitoring the implementation of work schedules and business processes
- Monitoring the performance of the operating model
- Preparation of consolidated analytical reports for the customer



RESULTS OF LOGISTICS OPTIMIZATION

- Reduce the fleet of used wagons **>25%**
- Optimization of the use of shunting locomotives **>12%**
- Acceleration of the wagons' turnover **>17%**
- Shorter waiting time for handling wagons on cargo fronts **30%**
- Growth in speed/accuracy/rhythm of delivery **30%**
- General reduction of the transportation costs per 1 ton of products **20%**

IT SOLUTIONS FOR LOGISTICS MANAGEMENT. RZDL NAVIGATOR RZDL CARGO



BASIC AUTOMATION PROCESSES

- Performance analysis and evaluation
- Production planning and accounting
- Dispatch control and monitoring
- Automation of technological processes



ENTERPRISE AUTOMATION OBJECTS

- Freight zones
- Enterprise stations
- Adjacent stations
- External logistics



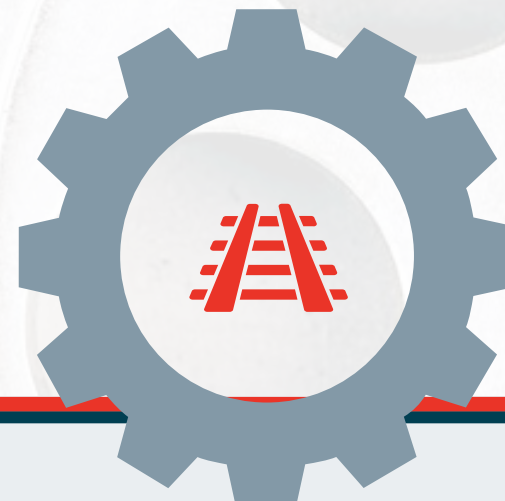
FEATURES OF EDIS

- Intuitive interface
- Integration with ERP-systems, automated systems for recognition and accounting of rolling stock, etc.
- Ability to adapt to the needs of a particular enterprise
- Ability to obtain information about the location and approach of wagons
- Extensive functionality and capabilities for analyzing transport activities, as well as necessary reporting generation



IT LOGISTICS MANAGEMENT INCLUDES

- Railway transportation management
- Management of logistics assets
- Management of cargo and commercial work



ECONOMIC BENEFIT FROM THE USE OF THE SYSTEM



Increase in the rolling stock turnover / reduction of downtime by an average of **15%**



Reducing fines for abnormal downtime up to **25%**



Monitoring the state of shunting, cargo and technological operations



Consolidation into a single workspace of all services involved in solving logistics problems: supply, sales, logistics, etc.



Reduced load on enterprise infrastructure by **12%**



Reduction of time for preparation and execution of transportation documents



Reduced influence of the human factor, automation of work






Document flow with Russian Railways using EDS



IN 2023, RZD LOGISTICS ACQUIRED TWO TEM9 SHUNTING AND HAULING DIESEL LOCOMOTIVES

The four-axle TEM9 series shunting and hauling diesel locomotive, equipped with an AC-DC electric transmission and individual wheelset drive, is designed for shunting and hauling operations on 1,520 mm gauge railways and at industrial enterprises in the ferrous and non-ferrous metallurgy sectors, the chemical industry, the energy sector, industrial railway transport enterprises, the construction industry, and other fields.

ADVANTAGES

-  The TEM9 locomotives are manufactured using a modern modular assembly approach, significantly improving operational conditions and maintenance efficiency
-  The AC-DC electric transmission ensures high reliability and maintainability, reducing the total lifecycle cost compared to diesel locomotives with hydraulic transmission
-  The locomotive is equipped with a DG-882L diesel generator, offering improved operational and environmental performance. Additionally, a microprocessor-based monitoring, control, and diagnostics system has been implemented, along with an integrated ACOLA (Automatic continuous operation locomotive alarm) train safety system

SPECIFICATIONS

Axle Configuration	2o-2o
Total Diesel Power, kW (hp)	882 (1200)
Locomotive Weight, t	90
Overall Dimensions (per GOST 9238-83)	02-BM
Track Gauge, mm	1520
Static Wheel Load on Rails, tf	22,5 ±3%
Maximum Design Speed, m/s (km/h)	27,7 (100)
Starting Tractive Effort, kN (tf)	291,2 (29,7)
Continuous Tractive Effort, kN (tf)	216 (22)
Type of Traction Transmission	AC-DC Electric
Minimum Negotiable Curve Radius, m	50
Length Over Couplers, mm	16074





LOGISTICS AUDIT

JSC RZD Logistics conducts diagnostics (assessment) of a company's logistics system and evaluates the state of logistics business processes throughout the entire supply chain. The key functions of a logistics audit include:

- Railcar turnover assessment
- Throughput capacity evaluation
- Analysis of shunting operations
- Locomotive utilization assessment
- Review of existing operational technology
- Workforce performance evaluation
- Other related assessments



LOGISTICS CONSULTING

JSC RZD Logistics carries out a comprehensive set of interrelated procedures for diagnosing, developing, and implementing organizational, technological, and informational measures to optimize logistics business processes.

The key functions of logistics consulting include:

- Identifying and resolving bottlenecks at production sites
- Calculation and justification of capital and operating costs for development scenarios
- Determination of the required fleet of shunting locomotives
- Optimization of the daily operational schedule
- Other consulting services



SIMULATION MODELING

- Development of a dynamic model to optimize operational performance
- Identification of bottlenecks and development of solutions to improve rail infrastructure capacity
- Evaluation of operational technologies for planned infrastructure and assessment of processing capacity before conducting design and survey work, ensuring the selection of the optimal solution
- Preparation of a *feasibility study (FS)* and calculation of financial indicators for the investment project



RAILWAY TRACK CONSTRUCTION SERVICES:

- Development of a *technical passport* for railway tracks
- Design and engineering of railway infrastructure
- Earthwork operations for railway track construction
- Installation of rail track superstructure
- Construction of drainage and protective structures for railway embankments
- Installation of railway signaling, interlocking, and blocking (SCB) systems
- Soil stabilization within the railway right-of-way
- Railway electrification
- Construction of railway crossings

JSC RZD Logistics holds Certificate No. C-075-77-0559-77-290617, issued by a self-regulatory organization (SRO), granting the company the right to perform construction, reconstruction, major repairs, and demolition of capital infrastructure projects under a construction contract. The certification applies to particularly hazardous, technically complex, and unique construction projects (excluding nuclear facilities) and corresponds to the third level of responsibility.

WHY CHOOSE US?



Cost
Optimization

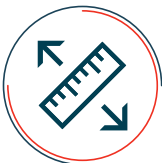


Quality
Assurance



On-Time
Construction

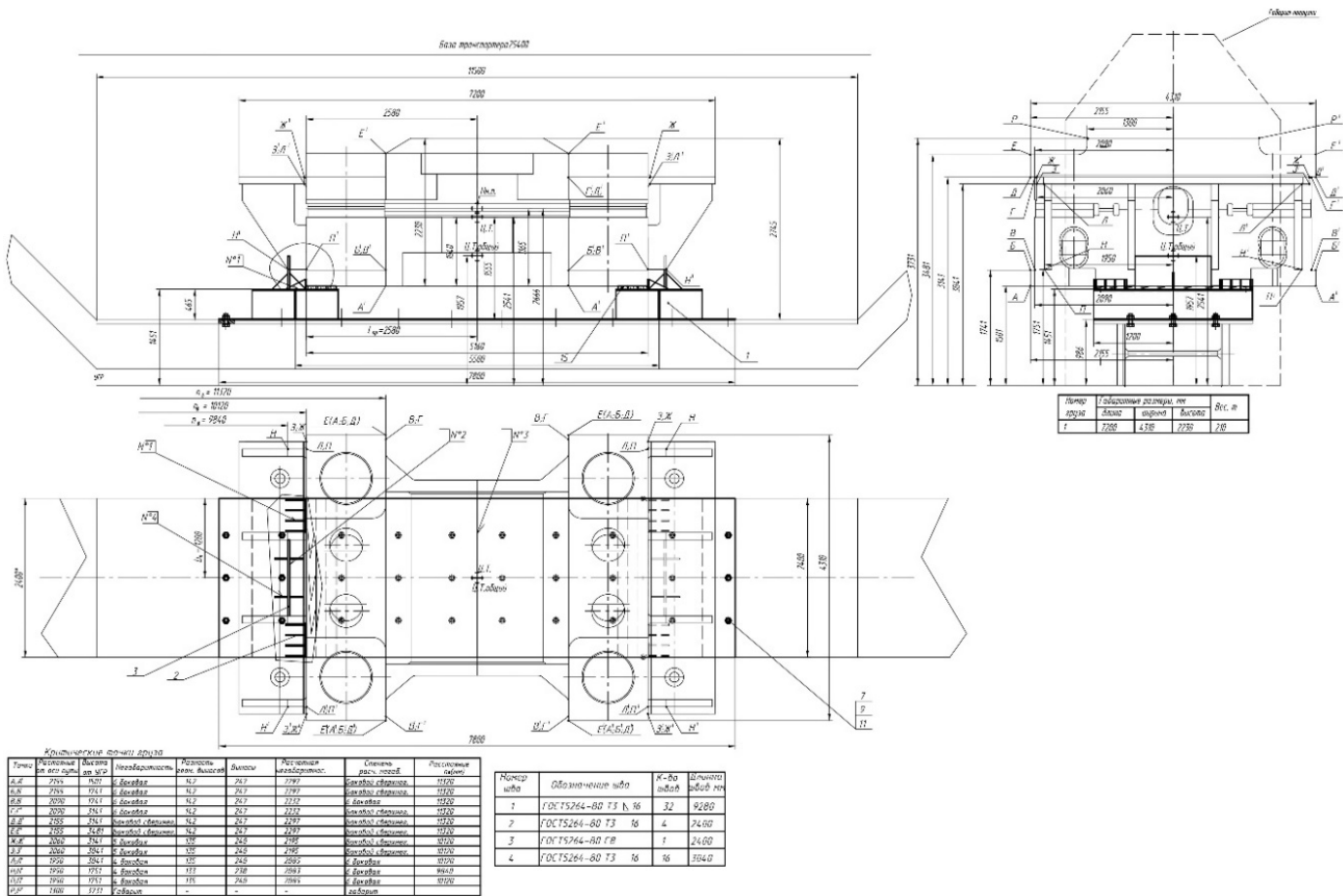










OVERSIZE CARGO

Organization of internal and international transportation of the oversized, long and heavy cargo by any means of transport in a "door to door" format

- Agricultural and heavy-weight construction equipment
- Machinery and automotive vehicles
- Heating and mine drilling equipment
- Oil and gas, power engineering equipment
- Metallurgical equipment and various machine-tools
- Rail tracks, rail equipment and rolled metal (rolled coil, metal structures, cable products)
- Heavy machinery and industry equipment



ADVANTAGES

- | | |
|--|---|
|  Comprehensive service within business ecosystems |  Organization of transportation of 100-meter rails on specialized rolling stock |
|  High competencies (dozens of developed and implemented unique projects) |  Organization of work with new products on the electronic platform of the Russian Railways-Freight Transportation holding |
|  Individual approach to every client |  Ensuring the sending of universal rolling stock and transporters for loading outside the Russian Federation within "Space 1520" |
|  Organization of rail and multimodal transportation |  Cargo safety and Insurance |
|  Fleet of transporter wagons in operational management |  Own qualified loading specialists |
|  Fleet of universal and specialized rolling stock (platforms, platforms with equipment and turnstiles) |  First/last mile delivery |
|  Organization of "windows" for crossing railway infrastructure |  Organization of inland water transport services |
|  Cooperation with VNIIZhT allows one-time transportation on articulated transporters |  Контроль за продвижением груза на всем маршруте в режиме 24/7 |
|  Own design bureau for the development of drawings, MTU, NTU and fastening schemes, including oversized, long and heavy cargo | |

A comprehensive service for the development and implementation of non-standard logistics solutions from the design of transport and logistics schemes to the transportation by all means of transport.

- Cargo measurement
- Determining the overall dimensions of the cargo
- Selection of the type of rolling stock
- Development and coordination with Russian Railways of all drawings and fixation schemes
- Provision of a scheme approval service through a personal account on the RZD-Freight Transportation electronic platform, which ensures the transparency of the process, as well as saving the customer's time and financial resources
- Elaboration and survey of routes, coordination of transportation of oversized cargo
- Provision of the transporter wagons, the universal and specialized rolling stock
- Payment of the tariff on the territory of the Russian Federation and other states
- Provision of the buffer train cars and rolling stock for additional equipment and cargo
- Organization of loading and reloading, registration of transportation documents
- "Door to door" delivery
- Insurance services
- Customs clearance





AGROLOGISTICS

TRANSPORTING PERISHABLE GOODS

“**A**groexpress” – straight and multimodal export/import transportation of agricultural products in the dry, refrigerated containers and flexitanks.

- Regular Russia - China, Belarus-China export routes with the possibility of coupling at consolidation points (from 14 days)
- Food products delivery starting from one container to China, Turkey, Iran, India, UAE and CIS countries (Uzbekistan, Tajikistan, Kazakhstan, Turkmenistan, Kyrgyzstan and Azerbaijan)

ADVANTAGES



Comprehensive service within business ecosystems



Ability to ship mixed trains of different types of freight



Special rates for direct railway services



Scheduled trains



Own fleet of new autonomous refrigerated containers



"Door-to-door" delivery



Ability to ship from the Russian regions starting from one container



Online-system of the 24/7 temperature and humidity control in container



Express railway delivery



On-line tracking of the cargoes location




Transportation of temperature-controlled freight

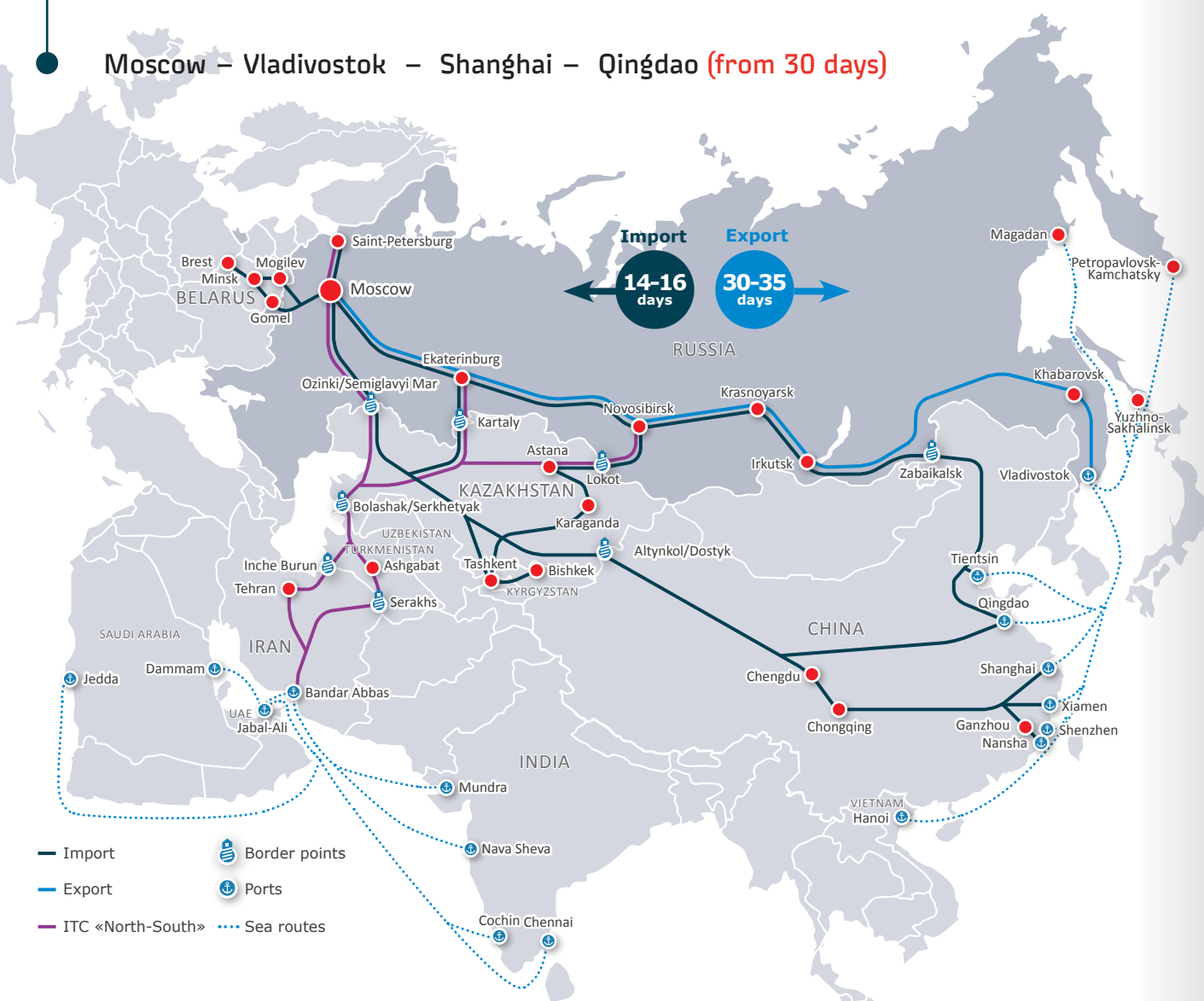


Insurance

DETAILED DESCRIPTION

EXPORT/IMPORT LAUNCH OF CONTAINER TRAINS ON ROUTE: RUSSIA — CHINA — RUSSIA FROM ANY PART OF OUR COUNTRY

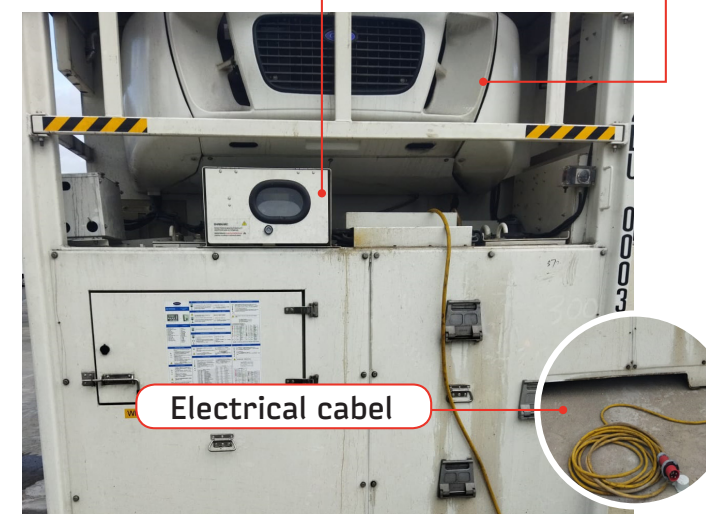
-  Export/import launch of the refrigerated train on route Russia – China – Russia (own fleet of 40 ft autonomous refrigerated containers)
-  Launch starting from one container by the direct Russia – China rail route, including launches from Russian regions
-  The average shipment time on route Russia – China – Russia (25 days)
- Moscow – Chongqing/Chengdu – Moscow (from 14 days)
- Moscow – Vladivostok – Shanghai – Qingdao (from 30 days)



Refrigeration unit Carrier Supra 1250



Network operation









Electrical cable

Diesel engine operation



Tank 1000 liters

BENEFITS FOR THE CARGO OWNER

-  Seamless transportation of temperature-sensitive cargo, which enables unbroken cold supply chain
-  **25-30 days** of reserve for reliable operation of the refrigerated container at all stages of international transportation:
 - Shipment and auto-delivery
 - Handling at the railway terminal and railway transportation
 - Seaport handling and shipping
 - Unloading and auto-delivery to the client
 - Seamless international railway transportation between the Russian Federation and China, Turkey, etc. (independence of railway transportation from different railway gauges in the Russian Federation and other countries)
-  **61,1 m³** Maximum load volumes
-  **-29° C / +29° C** Temperature regime
-  **27 040 kg** Maximum load weight
-  **Contemporary fleet of container** equipment produced in 2022

«PHARMEXPRESS» SERVICE –

delivery of pharmaceutical cargo, raw materials for pharmaceutical production, cosmetics, medications and components by means of company's own validated autonomous containers in accordance with all GDP requirements and with guarantee of unbroken cold chain, which meets the temperature needs of transported cargo.

OUR ADVANTAGES



All modes of transport: railway, auto, aviation



The fleet of allocated validated refrigerated containers without commodity neighborhood



Insurance and customs services

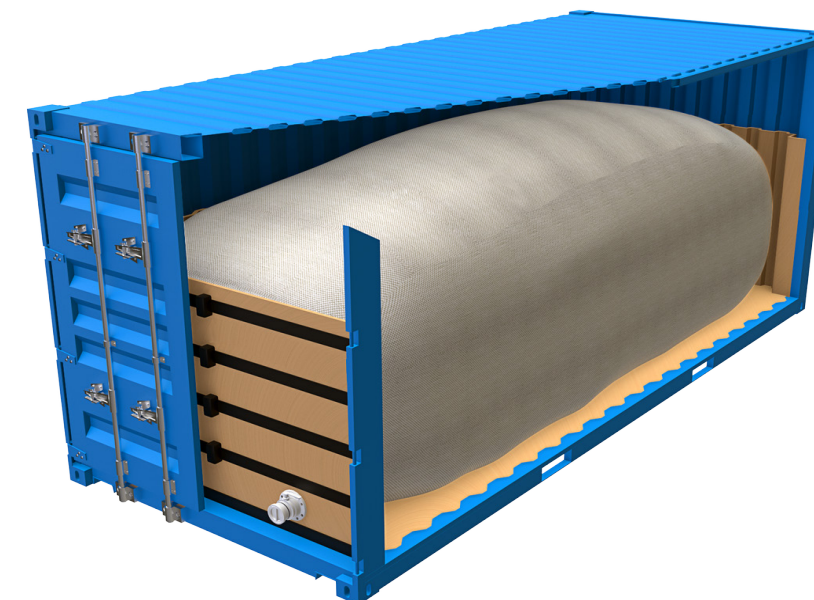


GPS-tracking, including the territory of China



Remote control of temperature. Dispatchers in the company's staff

Autonomous container allows to minimize all possible risks during multimodal transportation: change of gauge track and transport, waiting time in terminals, procedures of phytosanitary and veterinary control.



TRANSPORTATION OF THE BULK CARGO

ADVANTAGES



Comprehensive service within business ecosystems



The average delivery time – 21 days



Direct container trains and shipment by single containers using flexitanks



"Door-to-door" delivery



Special rates for direct railway services, including subsidies from Chinese platform companies



On-line tracking of the cargoes location



Novosibirsk/Barnaul – Zabaikalsk – Chongqing (from 17 days)



Moscow – Zabaikalsk – Chongqing (from 25 days)

DETAILED DESCRIPTION

- Complex transportation of the bulk cargo in flexitanks - direct export transportation of vegetable oils to China using flexitanks as part of the single shipments and container trains (supply of vehicles for loading, installation of a flexitank, control of loading and in motion)
- Organization of export shipments of oil and fat products in flexitanks on the Russia - China route (special rates for sending trains from 82 twenty-foot containers) from anywhere in Russia
- Regular routes of the export direction Russia - China with the possibility of picking up at the points of formation of the modular trains
- Export shipments of single containers through seaports



FREIGHT LOGISTICS

A range of services for organizing the transportation of construction, raw materials, chemical, timber and other types of cargo in all types of rolling stock. The list of services includes:

- Multimodal transportation involving several modes of transport, including port forwarding
- Provision of rolling stock
- Payment of freight charges
- Services of the shipper and consignee
- Cargo handling
- Responsible storage of cargo
- Customs clearance
- Road transport

OUR SERVICES



Comprehensive service within single business ecosystem



Reducing forwarding charge



Ability to ship mixed trains with different types of cargo



Online tracking of the cargoes location



Wide agent network in Russia



Freight forwarding on spaces 1520 and 1435



Cargo safety and Insurance



Delivery by any type of rolling stock



ТАМОЖНЯ CUSTOMS



CUSTOMS CLEARANCE

JSC RZD Logistics is included in the REGISTER OF CUSTOMS REPRESENTATIVES (entry in the registry 1591 made on April 28th, 2023)

OUR SERVICES

-  Analysis of international trade documentation in order to make sure that it meets the requirements of customs legislation
-  Initiation of customs procedures for goods
-  Consultations for confirmation of customs value and classification code
-  Participation in the customs control (customs examination and inspection)
-  Simplified customs operations due to the use of specialized software program "AS_Logistics"
-  Opening and operational support (at temporary customs control zone is; temporary storage warehouse). Authorized Economic Operator
-  Customs declaration of goods transported by all modes of transport
-  Obtaining of permitting documentation and classification decisions from regional customs office and Federal Customs Service
-  Legal assistance during customs inspection and challenging decisions of customs authorities



RZD Logistics



www.rzdlog.ru | office@rzdlog.ru

10 Arbat str, Intracity terr. municipal district Arbat,
Moscow 119002, Russian Federation

+ 7 495 988 6868

Fax +7 (495) 748 32 32